

Perfect For Industries and Institutions

Pharmacy chain, Chemical plant, School Board, Utility Company? Yes, SECURITHOR works for security departments who want to keep monitoring or guarding internal.

Features such as video verification or staff tracking are easy to use with SECURITHOR. Standard Operating Procedures can be defined per site, zone or alarm code.

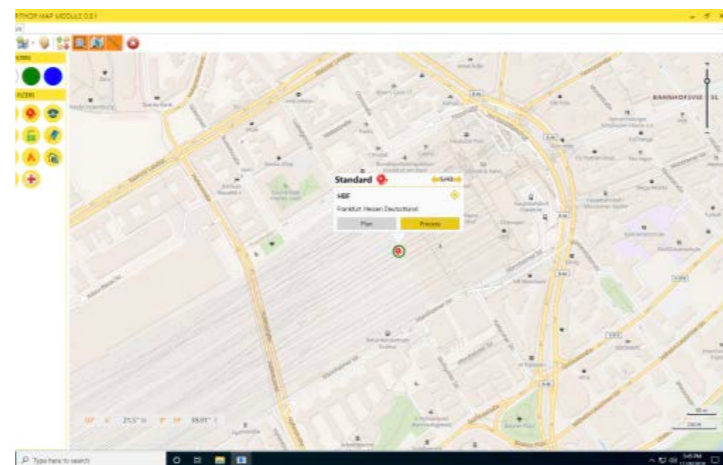
Dispatch your own response team

Your team is more accurate as your staff is trained specifically for your business. They are also dedicated to your enterprise and confidentiality is higher as they are your own employees. It's possible to dispatch them where you need them with MCB the Mission Control Board, no matter if you use it with SECURITHOR or as stand alone.

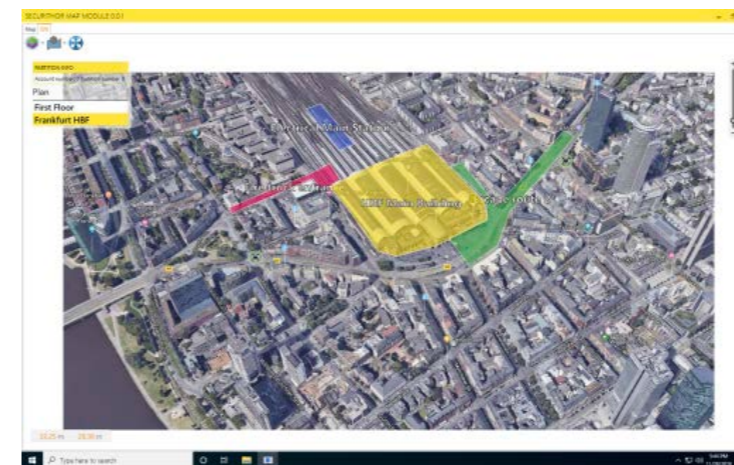
MVP Module for Industrial use

MVP is not only your Most Valuable Player. It is Map View and Plans for SECURITHOR. It keeps alarm processing simple. It starts with blinking dots on a map so your staff grasp alarm response easily without the extensive training of an ARC operator. Just zoom in and follow on screen indications to get more info on the alarm signal.

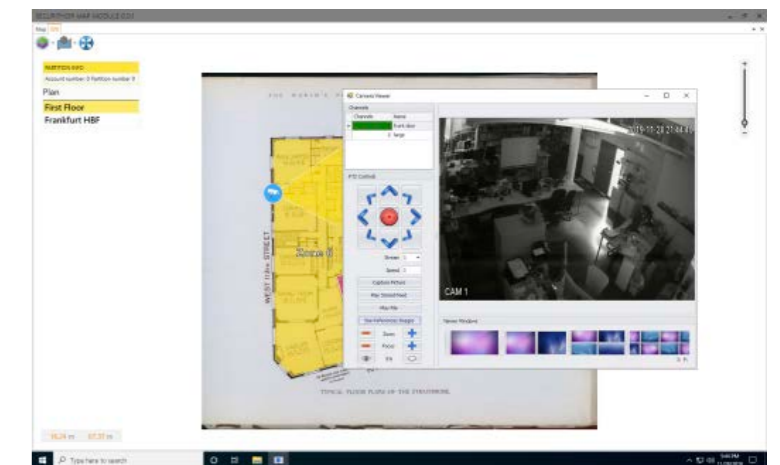
Get additional camera views and information showing on floor plans as MCDI camera viewer can be integrated with plans. In cooperation with technological partner PROG 1.



View alarm sites from the map. Zoom in or click for more options



Site descriptions brings more info, beyond the usual alarm view



From the floor plan, you know camera locations and access views



MVP Map View and Plans

MVP proposes an easy to grasp, intuitive way to respond to alarm and fire events.

Clear icons show types of alarms and which site is armed or disarmed.

One click to find closest staff member or fire house. The right tool for industries and

Institutions who want to supervise their own intrusion and fire alarms.

All the information you need to provide the best response for intrusion or fire alarms. From Live Map, open corresponding plans stored for the site. Zone or Pull Station location blink and all relevant info is available: detectors, entrances, extinguishers, exits, foggers, etc...

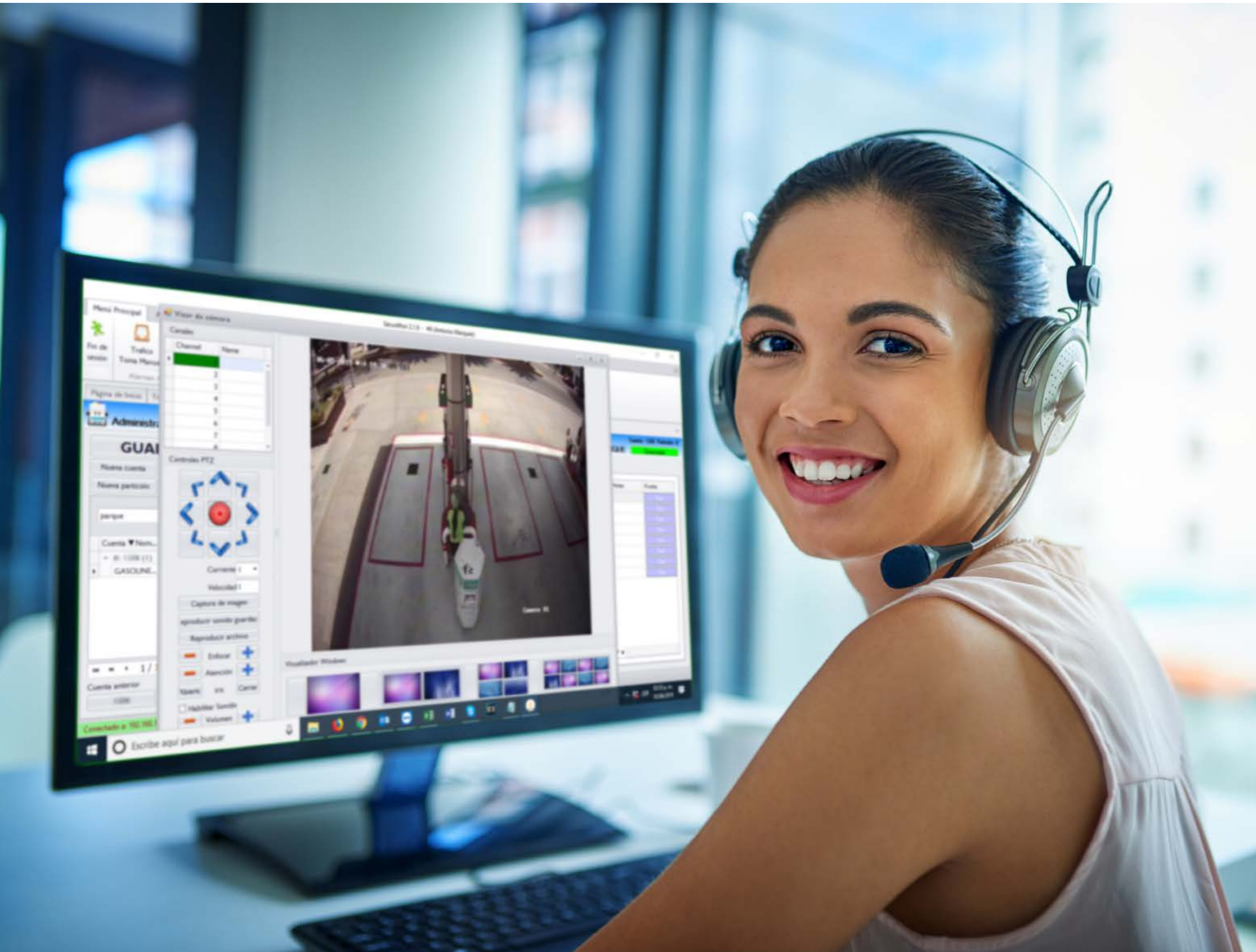
Camera coverages are drawn on plans. Open the camera viewer from the plan to confirm who's on site, if a burglary is in progress, or smoke presence and fire propagation.

The screenshot displays the Securithor 2.4.0 software interface. The main window shows a live map of Frankfurt, Germany, with various overlays and information panels.

- Top Panel:** Contains navigation and utility icons such as Log Out, Traffic, Auto Pick Up, Create Alarm, Pending Followup, Accounts, Partitions, Cities, Reports, Templates, Operators, Petrol Management, Cellar ID, Live Map, Messagebird, WhatsApp, Settings, and Alarm!
- Left Panel:** Includes filters for PARTITIONS (3 active, 52 total, 0 disabled, 185 total), STAFFS (1 active, 0 total, 0 disabled, 3 total), STATE FILTERS, STAFF FILTERS, and ALARM FILTERS.
- Map View:** Shows a street map with several icons. A red icon with a white crosshair is labeled "Shows armed/disarmed status in real time, directly on map". A green icon is labeled "Works with Mission Control Board to locate closest Fire Station, Patrolmen, Guards and Technicians". A blue icon is labeled "Initiate a call directly from Live Map and Click To Dial". A yellow icon is labeled "Numerous plans stored per site to show floors, surrounding grounds, access routes and many relevant details such as fire hydrants, exits".
- Information Panels:**
 - Eric Methot:** Available, 19-2 - Lamborghini Aventador Driver, Last update: 8/30/2022 1:28:11 PM.
 - Burglary (42218):** ML02 - Object disappeared | person(s) - 8/30/2022 9:54:06 AM. Location: 2nd Floor office, South Side Frankfurt (Main) Hauptbahnhof. Account #1236, Partition #0. Address: Am Hauptbahnhof 1 Frankfurt Hessen Deutschland 60329. Phone Number: 514-481-1067, Extension: 514-573-1320. Manager: Eric METHOT.
- Plan View Window:** Shows a detailed floor plan of the "2nd Floor office South Frankfurt HBF". It includes a camera viewer showing a live video feed of a room with a person. The plan also shows various fire safety features like pull stations, smoke detectors, and extinguishers.
- Plan Viewer Window:** Shows a list of plans for the site, including "Floor layouts Frankfurt HBF", "East aerial view Frankfurt HBF", "Overhead aerial Frankfurt HBF", and "2nd floor office South Frankfurt".

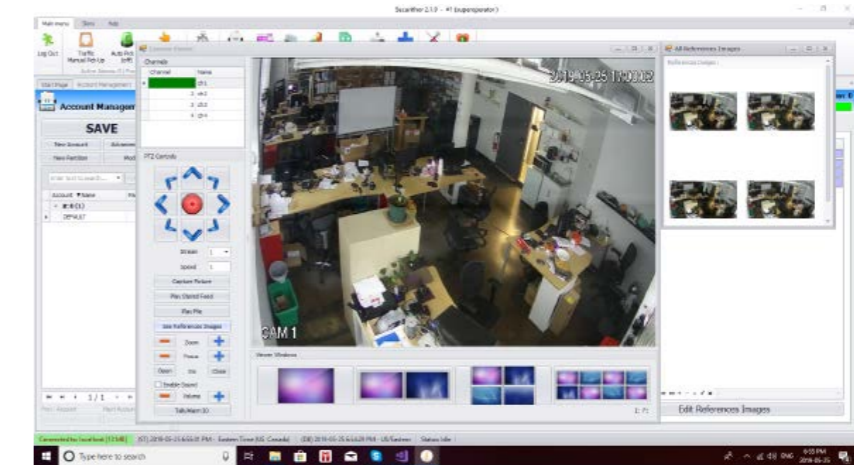
Complete info on fire alarms from plans: locations of pull stations, smoke detectors, hydrants, extinguishers, evacuation assembly points, fire stations, dangerous materials locations. As well as verification of smoke points and propagation from cameras.

VIDEO VERIFICATION



Reduce false alarms by adding Video Verification to your SECURITHOR.

- .Connect and Control cameras directly from Monitoring Software
- .Send first responders faster and more accurately
- .Record video to back and prove your interventions
- .Use DVR/NVR to trigger local devices: sirens, lights, fog machines, open gates



Why CMS over VMS?

Instead of watching dozens of screens or to rely on fuzzy and costly analytics, go for Video Verification with SECURITHOR. Video verification is a faster and more reliable way to supervise sites as it benefits from larger variety of sensors and devices.

Stop checking video cameras all the time. Verify them when alarm sensors tell you to do it. SECURITHOR Video Verification saves staff, equipment and bandwidth.

It provides a much faster response time as your first response does not depend on bandwidth.

VIDEO VERIFICATION

Open video streams automatically

Every alarm signal can trigger viewing of a remote camera or dvr, sometimes with automatic connection.

Reference images

CAM+ module adds reference images to the MCDI viewers. Easy to verify what the image should look like, or if it's an employee in the picture, etc...

Record video feeds in Securithor

Operator can keep video recording for proof of intervention. Recording is tied to the alarm signal for easy search

Control cameras remotely

MCDI viewers allow control over zoom, focus, iris, PTZ, 2 way voice. Even trigger of relays is available for some brands

Grab snapshot to confirm

Operators can click at any moment to grab a picture. Picture will be tied to alarm signal as proof for subscribers.

Access camera and nvr timelines

Use the MCDI viewer to verify recording directly on the NVR. Jump on timeline from SECURITHOR viewer.

Pre-Alarm

Access video feed a few seconds earlier to counter transmission delay

Select stream quality

Pre-select stream quality according to bandwidth and site transmission speed.



CAM Module Included in ST1 and STS

.Device to SECURITHOR: Dahua, Epcom, Hikvision with alarm listener from devices (SDK Integrations):

When applicable, MCDI Viewer with controls of several features zoom, iris, focus, PTZ motion, 2 way audio, relay controls.

Recording of video feed. Snapshot on demand.

Pre-alarm per device

Automatic opening of provisioned video feed.

Stream size selection

Alarm listener for Hikvision, EPCOM, Dahua

.Jumps to http link, rtp, rtsp or open external Windows app.

CAM Premium Module

Adds more features, integrations, and interfaces to the CAM Module. Multiple interface with third part systems.

.Audit trail for activation without prior alarm signal

.Reference images for the MCDI Viewers: compare video feeds to reference images.

.More SDK Integration (devices to ST): Focus H&S, IDIS, Hanwha Wisenet, TVT*, Uniview, Vivotek.

.Interface/bridge type: Ajax Motioncam, Bosch CBS, Frontel from Videofied, Crow Cloud, Epcom Cloud, Manythings, Optex CHEKT, RISCO Cloud, Visonic Visnap and Power Manage*, MCDI VOD for Visonic*, ONVIF*

.Bridge to P2P: Dahua P2P, Hikvision P2P*, Uniview p2p*

.Alarm listeners from Cloud services: Ajax, EBS, CAMECT, Crow Cloud, Hik-connect, Hik-Proconnect, Optex CHEKT, Risco Vupoint,

Photo verification

With alarm receiving and access to third part servers for: **AJAX** Motioncam, **AMC** Cloud, **CROW** Cloud, **Hikvision** AXPRO, **MONITOREAL**, **RISCO** Vupoint, **EBS** AVAPro.

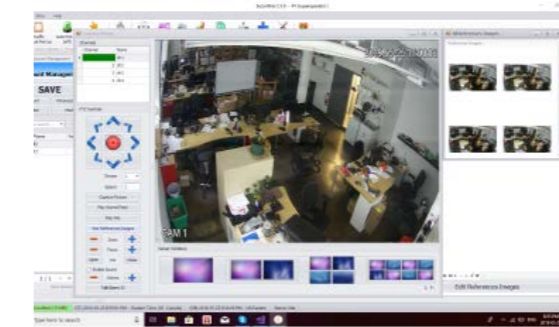
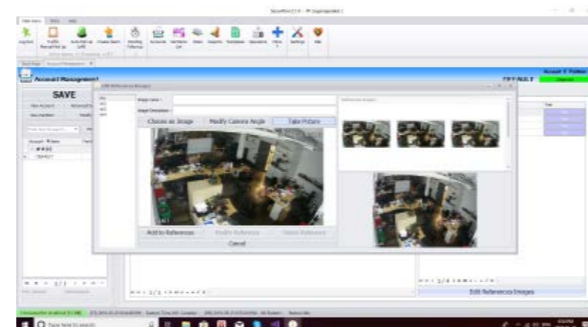
Alarms from Video Analytics

CAMECT, DAVANTIS, Hikvision, HIK-PROCONNECT, MONITOREAL, OPTEX CHEKT. ULTIINOUS: U-Safe/U-Alarm/U-Filter. Q4 23: DAHUA Series 5

Advanced integrations

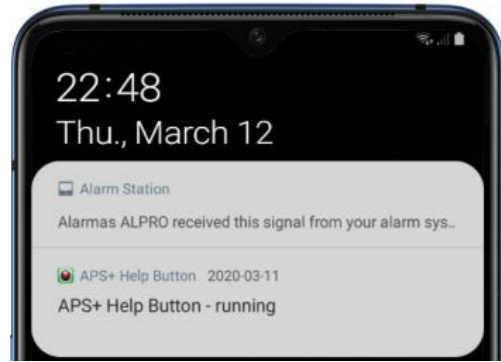
HIK-PROCONNECT: P2P+ Advanced integration with Hikvision AXPro alarm panels Alarms and PIRcam images.

*as courtesy, no technical support

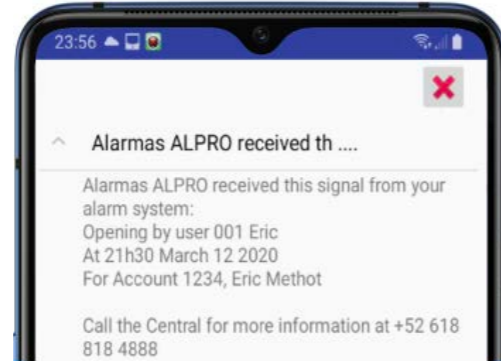


Push Notifications

Enhance your service by sending Push Notifications to your customers. No high message delivery fees like SMS, no spam filters like emails. Just high customer awareness and VERIFICATION to reduce false alarms



Notifications wake up phones



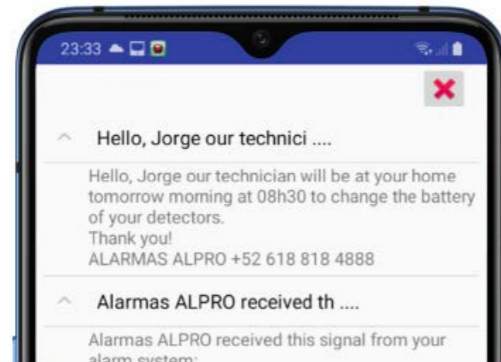
Alarm Signals delivered to Smartphones

It's independent from panel brands no matter if old or new. Notifications are centrally managed at your Central. Only one app for all your alarm panel brands.

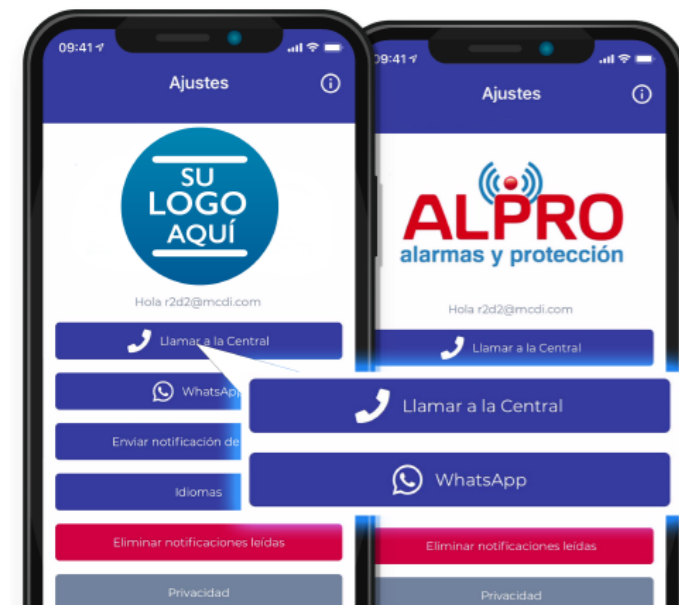
Each message is unique to your Central. Customize messages to your subscribers and select which alarm signals goes to whom. Set per account and alarm code. Notify up to 48 persons per alarm code.

Send more than alarm notifications. Reach subscribers or whole groups with a personal approach. Send your own messages: Greetings, News, Power outage announcements, promote New Services from your CMS... or remind them to pay their bills.

MCDI handles all connectivity and app maintenance.



Send personal messages to customers



Branded YOUR way!

The VERIFICATHOR app is branded with:

- Your Company Logo
- Your Phone number
- Your WhatsApp number

Available in 21 languages for iPhone and Android

In cooperation with technological partner PROG 1

have the subscriber confirm the alarm



It's the ultimate way to reduce false alarms. The **VERIFICATHOR service** connects your SECURITHOR and your subscribers by having them confirm alarm signals before they are presented to the operators.

The subscribers confirms if a signal requires active response or not. They simply slide the event to the left and press cancel or slide to the right to request response by the ARC. You can set a timeout and decide if you allow them to request more time to decide. Plus you also get classic notifications and the gateway to send them push notifications on request.